

# Quick start guide Mini Monitor with lead

## Mobile phone detection

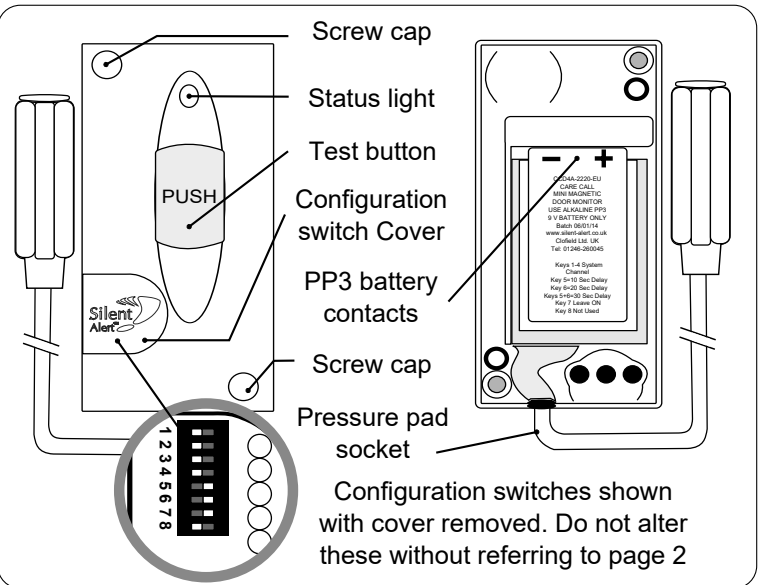
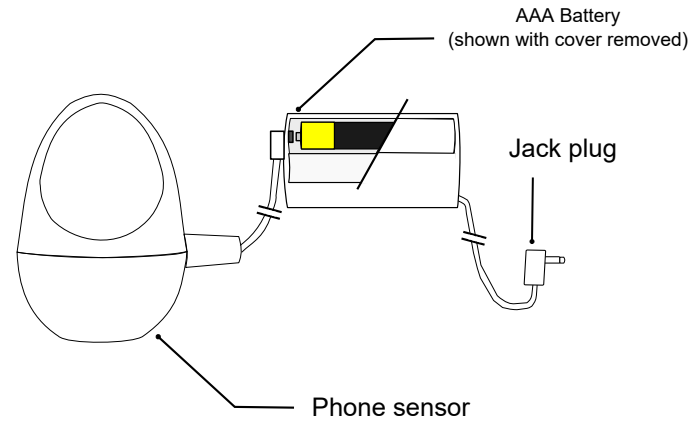


### Mobile phone activation

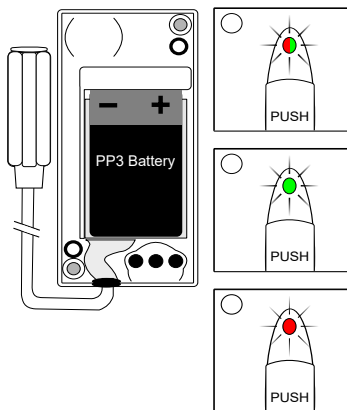
Any questions? Call us on 01246 450789

#### B9250 mobile phone sensor

Available from Action on Hearing Loss  
<https://www.actiononhearingloss.org.uk>



**2.** Install a 9 volt PP3 alkaline or lithium battery making sure to observe the correct polarity.



When a battery is first fitted the indicator light will flash red then green a few times then light solid green & pause briefly.

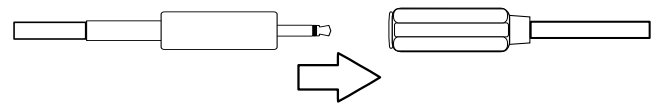
The light will then will flash green several times to show the battery voltage.  
 9 flashes = 9Volts in the battery.

If the light flashes red at this point the battery is flat and will need to be replaced.

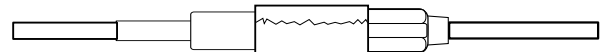
To repeat the battery check remove the battery, press the test button then re-insert the battery to start the sequence again.

**3.** The monitor is activated using a jelly bean switch.

Plug the switch plug into the socket on the monitor.

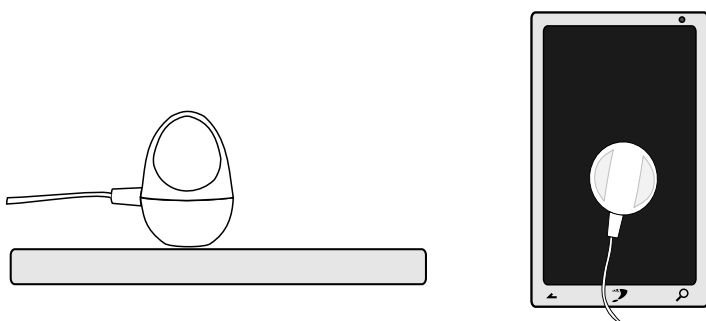


The connection can be taped for added security if required.



The monitor may transmit the first time the connection is made, this is normal.

**4.** Place the sensor onto your device's screen.



#### WARNING

When installing the sensor make sure the cable doesn't cause a trip hazard.

**5.** When you receive a call the display will illuminate and trigger the Mini Monitor

